

CS 725/825 & IT 725

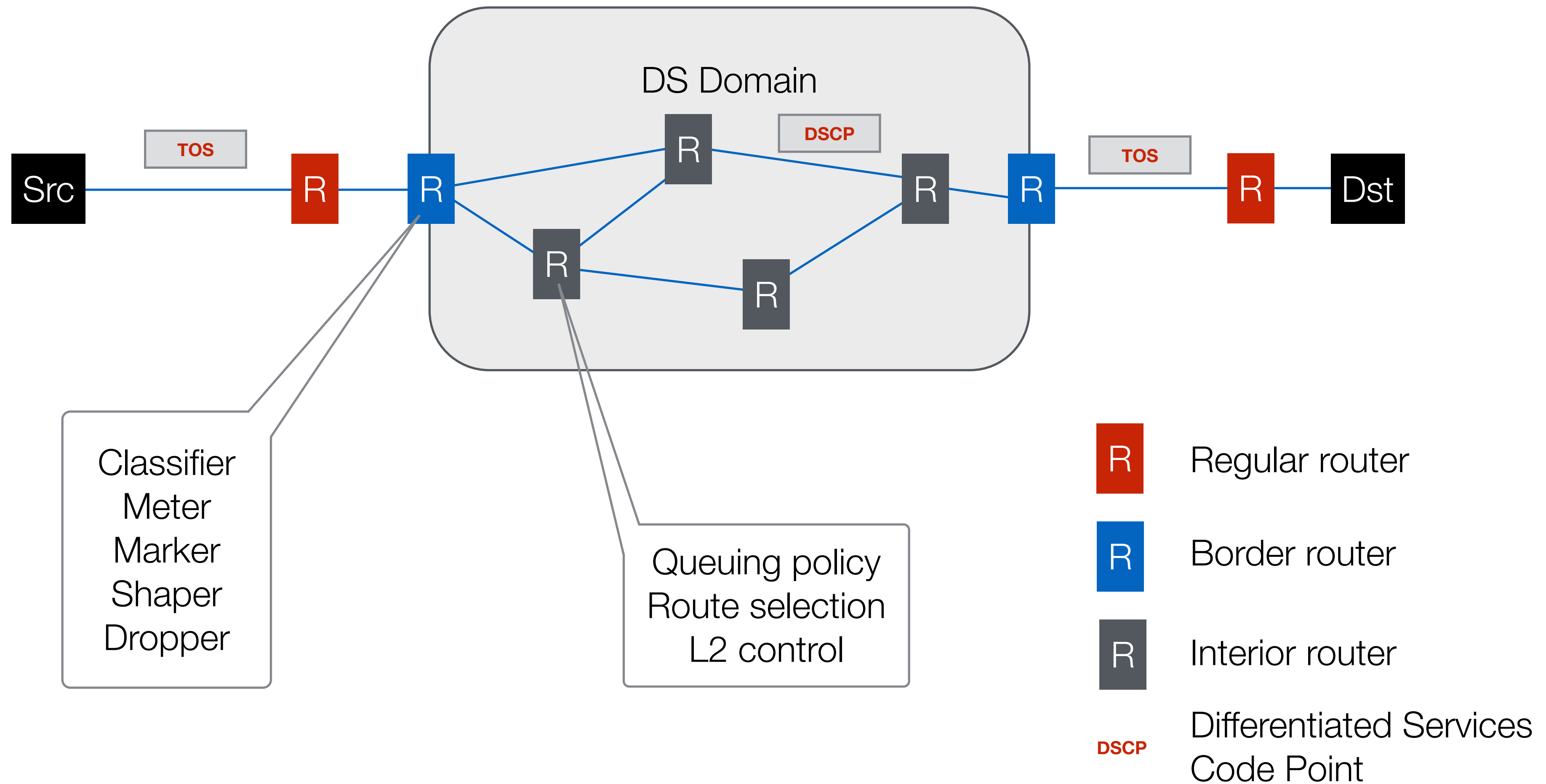
Lecture 21

# Network Layer

---

November 19, 2025

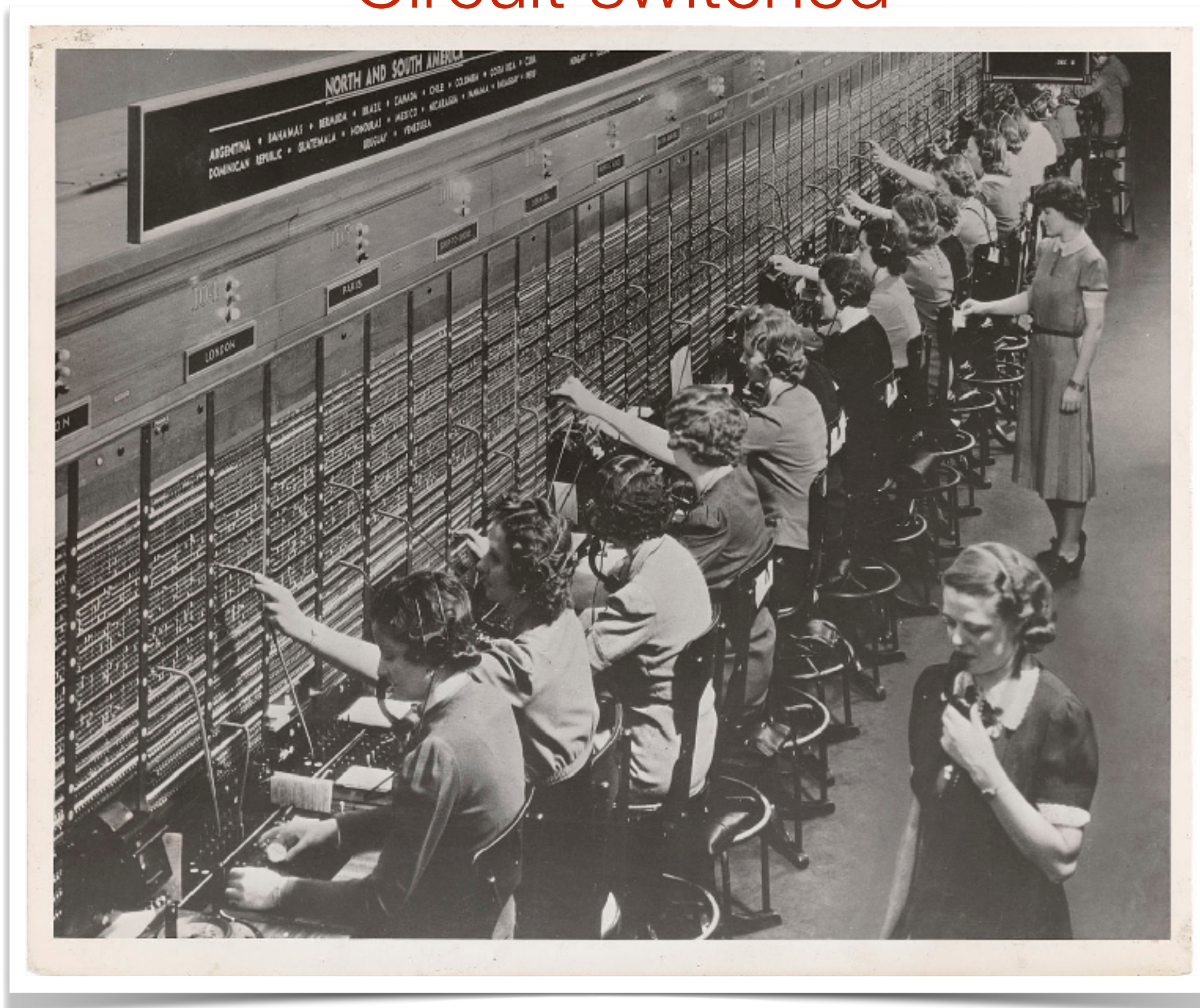
# Differentiated Services



# Categories of Networks

- ▶ Compromise: virtual packet switched

Circuit switched



Packet switched



# Virtual Circuits

---

- ▶ Problems with packet-switched networks:
  - no connection between packets
  - difficult to provide QoS
  - difficult to provision resources
  - difficult to control routes the packets take
  - reactive fault-tolerance
- ▶ All these problems can be addressed in circuit-switched networks

# Circuits vs Virtual Circuits

---

## ▶ Virtual Circuit Switched Networks

- an overlay on top of a packet switched network that provides a circuit-based service
- “most of the benefits at a fraction of the cost”
- trading ability to control for loss of simplicity

## ▶ Always the next big thing

- OSI - Open System Interconnect (R.I.P.)
- ATM - Asynchronous Transfer Mode (R.I.P.)
- MPLS - MultiProtocol Label Switching (alive and well)

# Virtual Circuit Switching

---

- ▶ Virtual Circuit (VC)
  - separation of routing and forwarding
- ▶ Circuit Switching Table
  - state-full forwarding
- ▶ Virtual Circuit Identifier (VC id)
  - global circuit vs locally significant circuit identifier

# MPLS

---

## ▶ MultiProtocol Label Switching

- a protocol providing virtual circuit service
- designed to coexist and complement existing protocols, not to replace them

## ▶ One protocol, many uses:

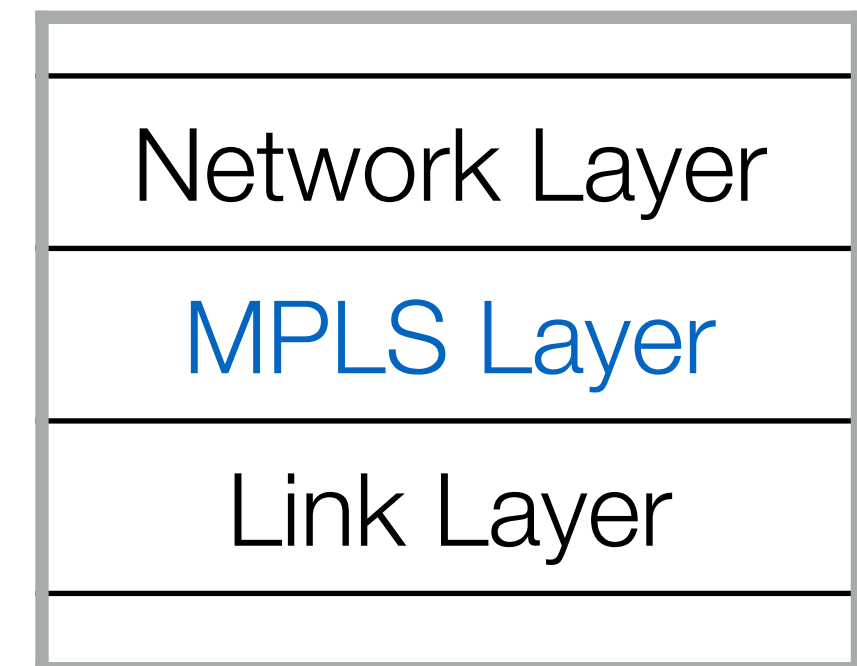
- simplification of forwarding
- traffic engineering
- protection and restoration
- support for legacy services
- VPNs, ....

# MPLS Terminology

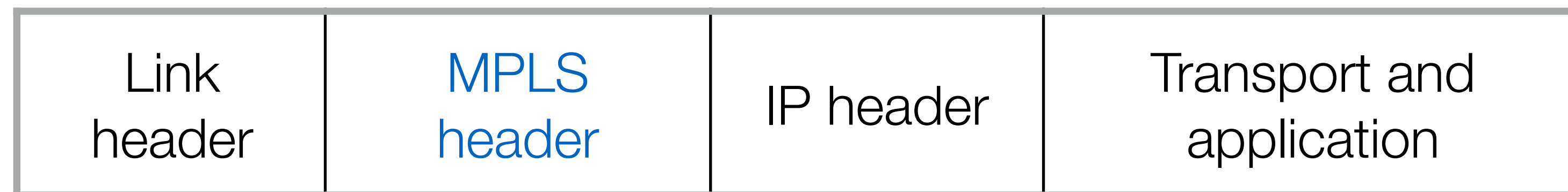
---

- ▶ **Label Switched Path (LSP)**: a VC
- ▶ **Label**: VC id
- ▶ **Label Switch Router (LSR)**: a switch
- ▶ **Forwarding Equivalence Class (FEC)**

Typically:

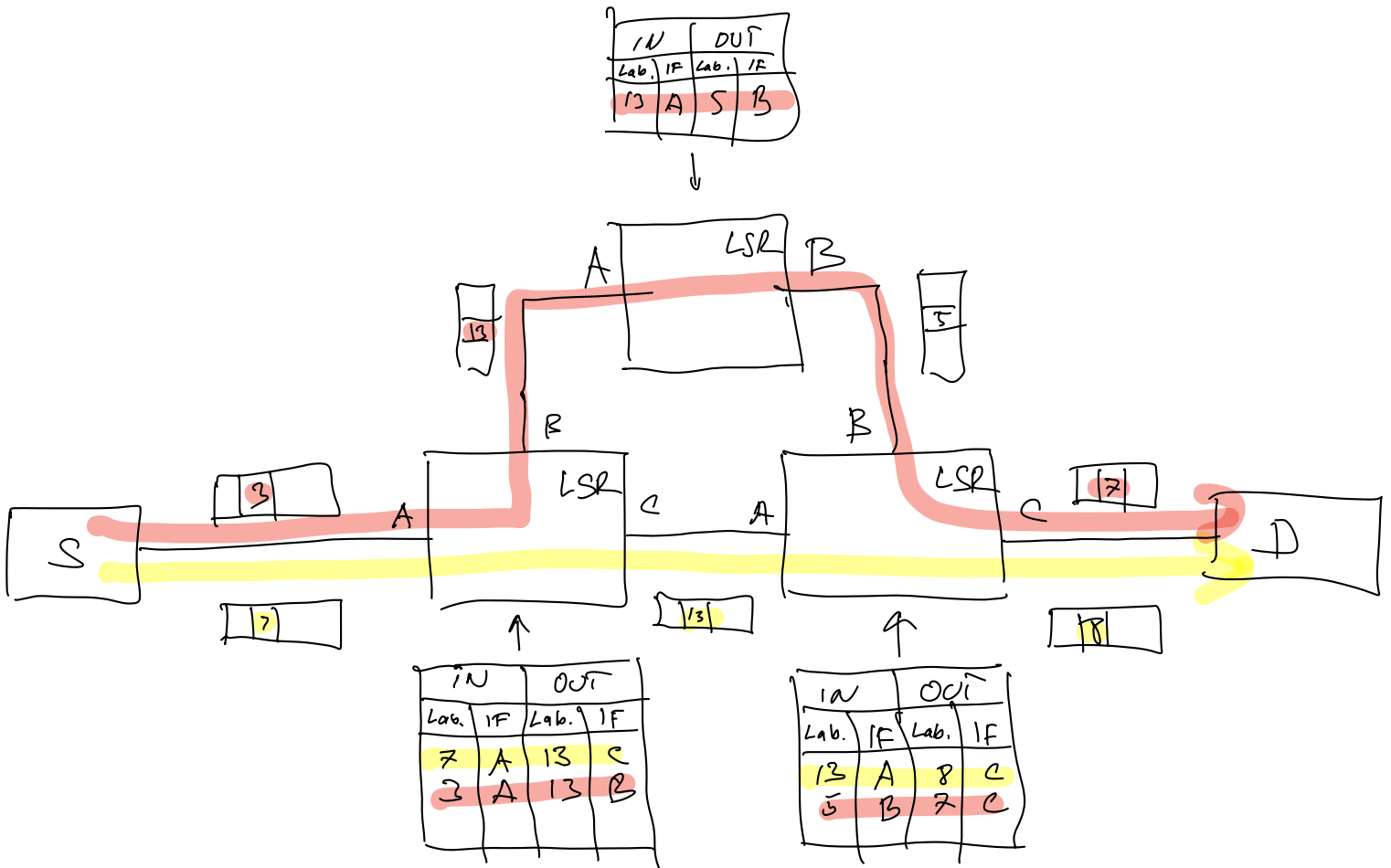


MPLS packet





# MPLS (VIRTUAL CIRCUIT) SWITCHING



- LSP (VC) 1
- LSP (VC) 2